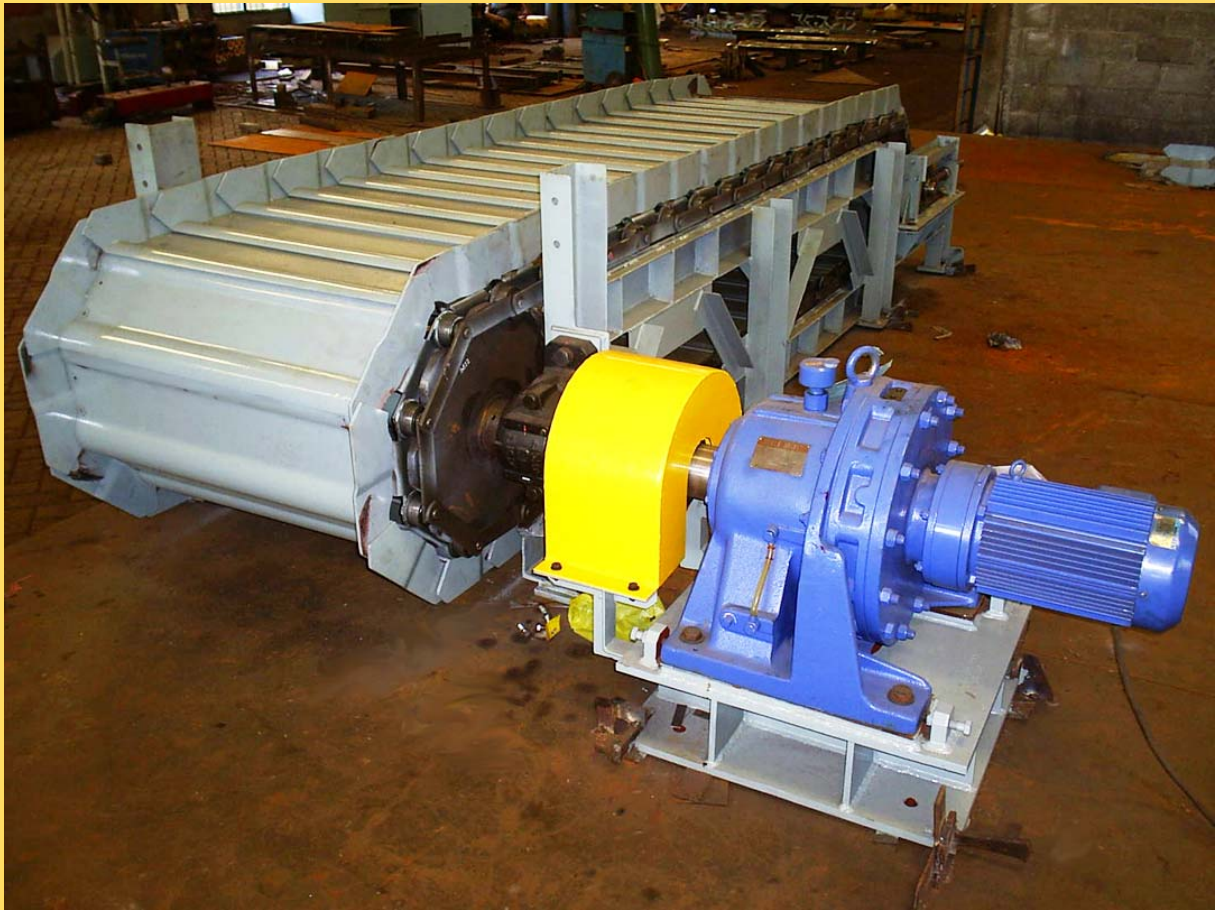


APRON FEEDER

MADE IN INDONESIA



APRON FEEDER

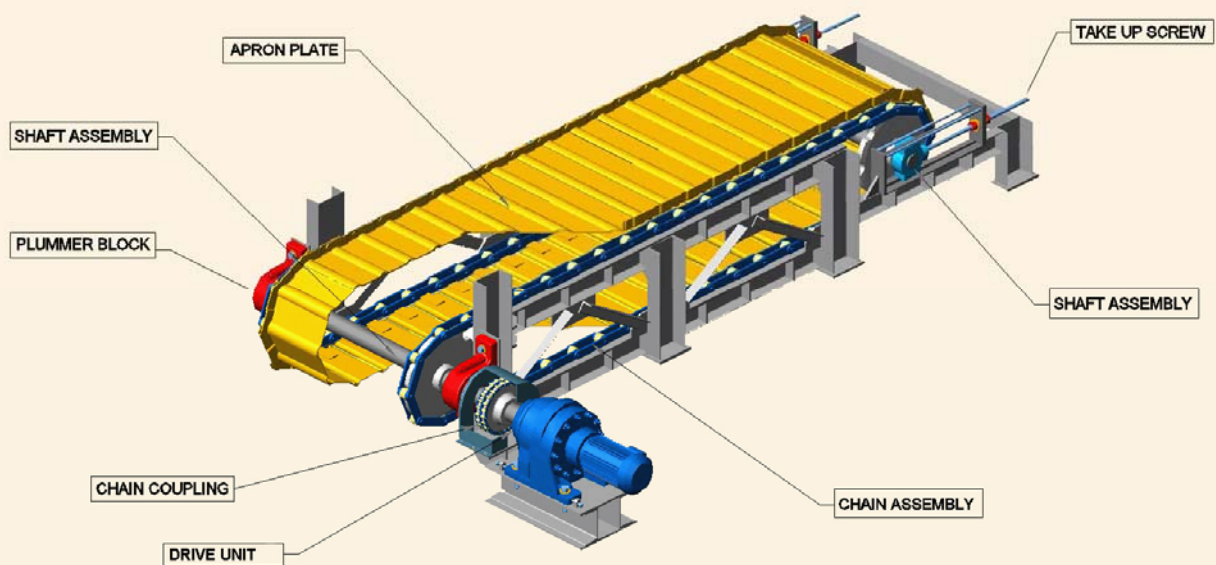
Apron Feeder consists of a continuously moving transporter attached to a pair of parallel endless roller chains running on track supported by the conveyor framework, and carrying, overlapping or interlocking plates or pans.



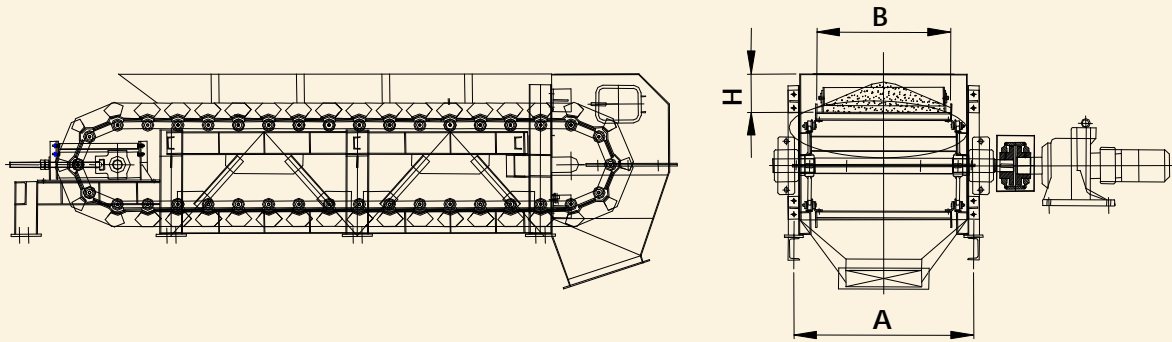
The unique design of SIKO's Apron Feeders enables them to handle large quantities of products with excessive weight, lumps, sharpness, temperature or even abrasiveness.

SIKO's Brand Equipment has been supplying to industrial plant in Indonesia and also overseas countries. We strive for high quality in everything we do, as a center of excellence.

MAIN PART of APRON FEEDER



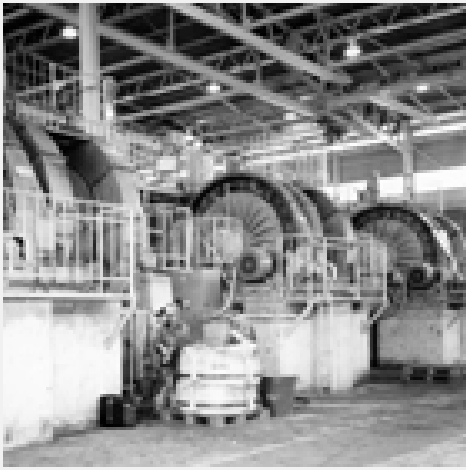
STANDARD DIMENSION



WIDTH mm	A mm	B mm	CAPACITY (t/h)			POWER (HP)						
						NO LOAD N1	HORIZONTAL / m			VERTICAL / m		
			H (mm)				H (mm)			H (mm)		
			300	450	600		300	450	600	300	450	600
450	750	370	25	-	-	0.08	0.06	-	-	0.11	-	-
600	900	520	35	53	-	0.08	0.07	0.11	-	0.16	0.22	-
750	1050	670	45	68	91	0.15	0.09	0.13	0.18	0.20	0.30	0.40
900	1200	820	56	83	111	0.19	0.11	0.15	0.20	0.25	0.37	0.49
1050	1350	970	65	98	131	0.30	0.12	0.17	0.22	0.29	0.44	0.58
1200	1500	1120	76	113	152	0.34	0.13	0.18	0.24	0.34	0.51	0.68

TECHNICAL DATA (to be filled out by the customer)

Capacity : t/h
 Speed : m/min
 Apron Width : mm
 Material Handled :
 Material Density : t/m³



pt. cemara siko engineering indonesia

Head Office :
Gedung Mandiri Lantai 4.
Jl. Tanjung Karang No. 3-4A
Jakarta Pusat - 10230
Phone. +6221-3162540
Fax. +6221-3162542
Email : corp@siko.co.id
Website : www.siko.co.id

Project Office :
Jl. Kendal No. 7, Blora
Jakarta Pusat - 10310
Phone. +6221-3907655/56/57