

*ENVIRONMENTAL PROTECTION
EQUIPMENT FOR WASTE GAS*

“ Jet Pulse Type “

BAG FILTER

MADE IN INDONESIA



THROUGH ITS ENVIRONMENTAL PROTECTION EQUIPMENTS,
SIKO COMMITS TO KEEP THE AIR ALWAYS FRESH AND
TO MAKE THE WORLD MORE LIVABLE

We proudly offer not only *equipment* but also our service In *total system engineering* based on total concept for prevention of air pollution. **SIKO'S BAG FILTER** is one of our brand product which is made in Indonesia.

With recent rapid progress industrialization in Indonesia, it becomes indispensable to solve the dust problem as the pollution consciousness of public also progress rapidly.

To comply with the society wish, we, pt. cemara siko engineering indonesia, are glad to offer our **BAG FILTER**, developed by us with the support of Japanese engineering companies, with a competitive price.

We can also provide you with other dust collectors such as :

- SQUARE TYPE BAG FILTER (CLOTH SIZE, 1.0 Mw X 1.0 mD)
- HIGH TEMPERATURE DUST COLLECTOR (UP TO 800°C)
- ELECTROSTATIC PRECIPITATOR
- MULTICYCLONE
- VENTURY SCRUBBER

It will be a great pleasure if we could be of help in improving environmental conditions in your factory.

GAS SCRUBBER is other SIKO'S Brand Environmental Equipment that we can proudly offer.

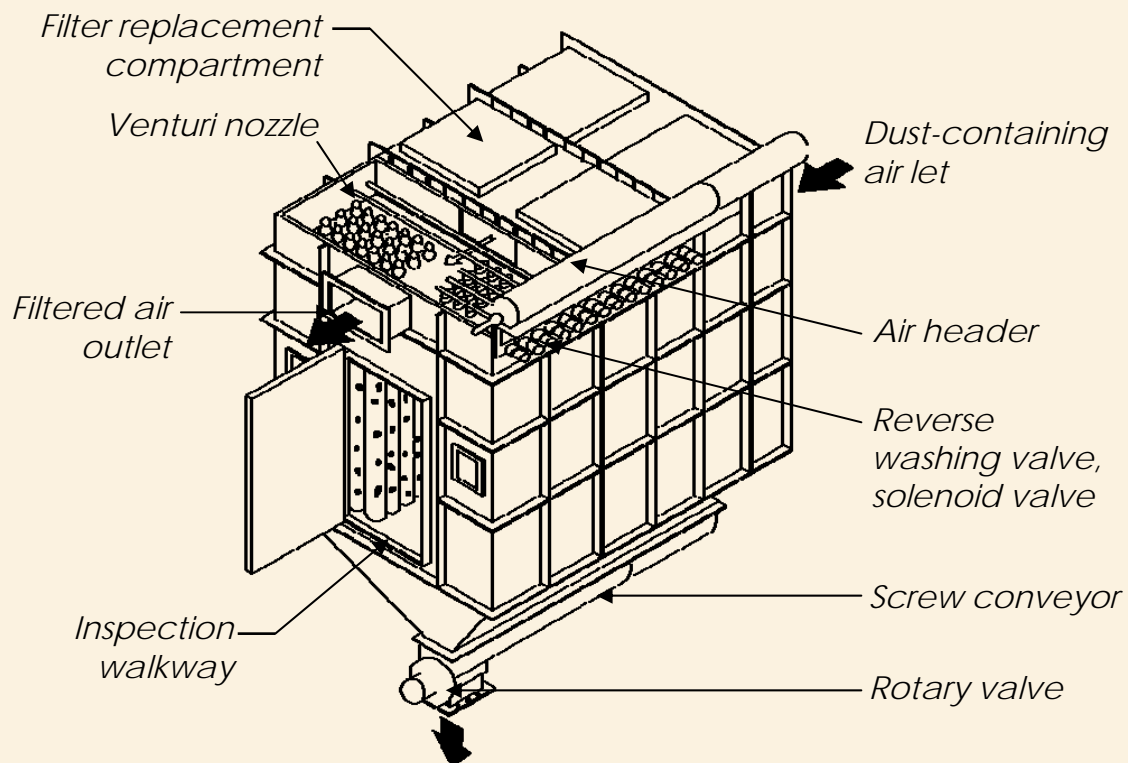
BAG FILTER

FEATURE OF BAG FILTER

“Bag filter” is an apparatus to separate dust from dust laden air or gas by filtering through fabric filter Bag filter is generally applied for cleaning industrial exhaust gas before discharging to the air.

Feature :

1. Can collect almost every kinds of dust
2. Extremely high efficiency _____ more than 99.9%
3. Low pressure drop _____ about 80-200 mmAg
4. Can collect fine partiele _____ Down to 0.1M
5. Easy maintenance.



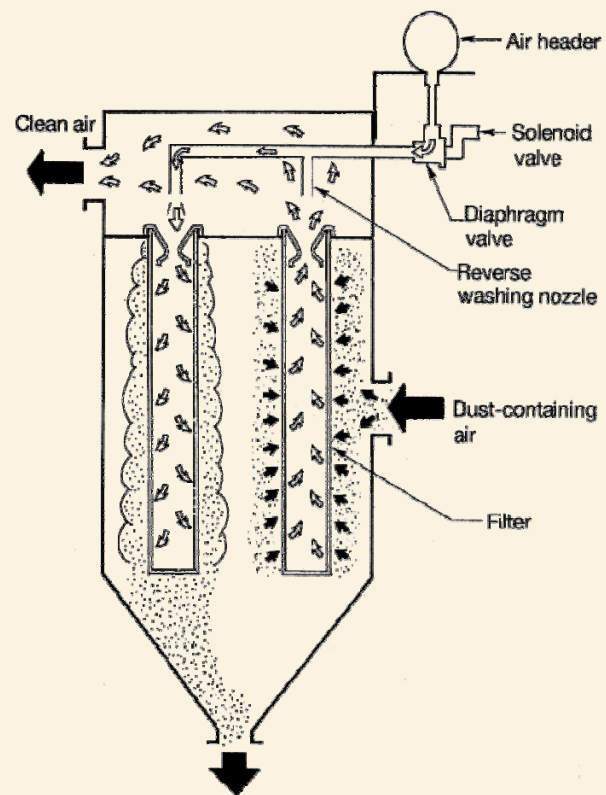
SIKO BRAND JET PULSE BAG FILTER

- Quick dust blow off by compressed air (jet pulse)
- Constant operation with minimum fluctuation of pressure loss
- Easy exchange of bag (applied top access method)
- Good performance for high dust density gas application

DUST COLLECTION PROCESS

Filtering Operation

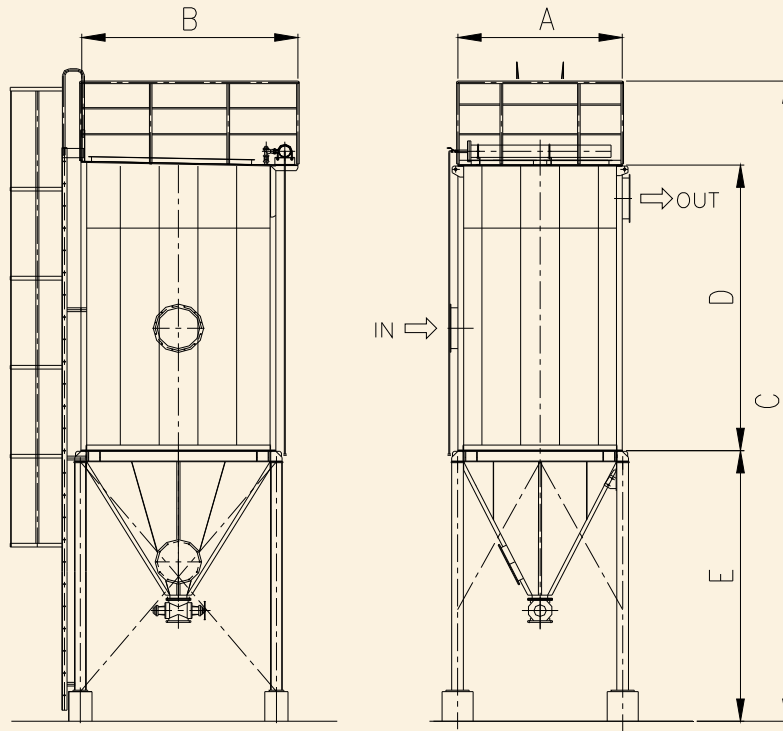
1. A stream of dust laden gas enters from the inlet, hit the louver plates and divided into several streams.
2. Coarse dust (bigger size of dust) drop directly to the bottom of hopper when it hit against louver
3. Fine dust is deposited when the gas pass through the bag. After being filtered the cleaned air flows through the outlet and discharged into the atmosphere by fan.



Dust blow-of Operation

4. Dust deposited at the bag, is quickly (0.05 – 0.1 sec) shaken off by compressed air (4 ~ 5 kg/cm²) injected from the blow nozzle into the bag.
5. Jets pulse is made periodically by automatic sequence controller.
6. Dust collected at the bottom of hopper is discharged by screw conveyor and rotary valve.

STANDARD SIZE OF SIKO BAG FILTER



TYPE	FILTER AREA (m ²)	BAG Q'TY (pcs)	COMPRESSED AIR NI/min	A	B	C	D	E
S-CP 48	86	48	120	1350	2220	8250	4300	3150
S-CP 72	130	72	180	2050	2150	8400	4300	3300
S-CP 96	273	96	240	2700	2150	8750	4300	3650
S-CP 112	202	112	280	3200	3600	4000	4300	3500
S-CP 128	230	128	320	3600	2150	8550	4300	3500
S-CP 144	259	144	360	4000	2150	8550	4300	3500
S-CP 160	288	160	400	4500	2150	8550	4300	3500
S-CP 192	346	192	480	5350	2150	8550	4300	3500
S-CP 224	403	224	560	6250	2150	8550	4300	3500
S-CP 256	461	256	640	7150	2150	8550	4300	3500
S-CP 288	518	288	720	5550	3000	8580	4300	4150
S-CP 336	605	336	840	6450	3000	9550	4300	4150
S-CP 384	691	384	960	7350	3000	9520	4300	4150
S-CP 432	778	432	1080	8250	3000	9550	4300	4150
S-CP 432L	1000	432	1080	8250	3100	11000	5600	4150

B A G (FILTER CLOTH)

HOW TO SELECT BAG.

The points to be kept in mind in making selection of bag are :

1. Bag is resistant to dust and gas (chemical/temperature)
2. Dust is easily dropped off
3. Bag collects dust effectively
4. Bag is resistant to abrasion by dust
5. Gas quantity/velocity.

Kinds of filter cloth	Specific Gravity	Continuous Heat Resistant	Strength	Hygroscopic	Effect of	
					Acid	Alkali
COTTON	1.54	60°C	1	8	X	▲
POLYESTER (TETRON)	1.38	140°C	1.6	0.4	○	▲
POLYPROPYLENE (PYLENE)	0.91	160°C	2.5	0.05	○	○
POLYAMID (NYLON)	1.14	90°C	2.5	4	▲	○
THERM NYLON (NOMEX)	1.38	200°C	3	5	○	○
ACRYLIC 100%	1.17	100°C	1.1	0.5	○	○
GLASS	2.55	250°C	1	0	○	X
CERAMIC FIBER	0.18	900°C	-	-	○	○

○ GOOD
 ▲ NO GOOD
 X NOT RESISTANT

TO MEET EVERY REQUIREMENT OF YOUR DUST COLLECTOR SATISFACTORILY,
PLEASE ATTACHED THE FOLLOWING QUESTIONNAIRE, AFTER FILLING IT UP ANY
TIME YOU MAKE AN ORDER OR AN INQUIRY

1. **Name of customer** :
- Project :
- Location :

2. **Dust source**
-
-

3. **Dust Properties**
- a. Name of dust
- b. Specific gravity (g/cc) :
- c. Dust content (g/Nm³) :
- d. Particle size distribution :

4. **Gas properties**
- a. Composition/name :
- b. Gas volume (m³/min) :
- c. Temperature (°C) :
- d. Flammable/Explosive/Toxic/Corrosive/Abrasive

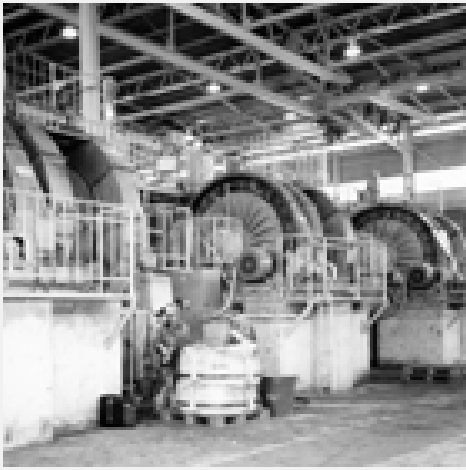
5. **Scope of estimation**
- a. Bag filter : Yes/No
- b. Blower : Yes/No
- c. Control damper : Yes/No
- d. Manual damper : Yes/No
- e. Compressor : Yes/No
- f. Engineering : Yes/No
- g. Duct/hood : Yes/No
- h. Wiring : Yes/No
- i. Installation : Yes/No

6. **Operation----- method**
- | | |
|--|-----------------------|
| | Direct control panel |
| | Panel on central room |
| | Other system |

7. **Regarding the bag filter you are or were using :**
- a. Type (model)
- b. With special request

8. **Other products developed by siko**
- a. Square bag type : easy maintenance
- b. High temperature dust/gas collector (800°C)

9. **Other particular items, if any** :



pt. cemara siko engineering indonesia

Head Office :
Gedung Mandiri Lantai 4.
Jl. Tanjung Karang No. 3-4A
Jakarta Pusat - 10230
Phone. +6221-3162540
Fax. +6221-3162542
Email : corp@siko.co.id
Website : www.siko.co.id

Project Office :
Jl. Kendal No. 7, Blora
Jakarta Pusat - 10310
Phone. +6221-3907655/56/57