

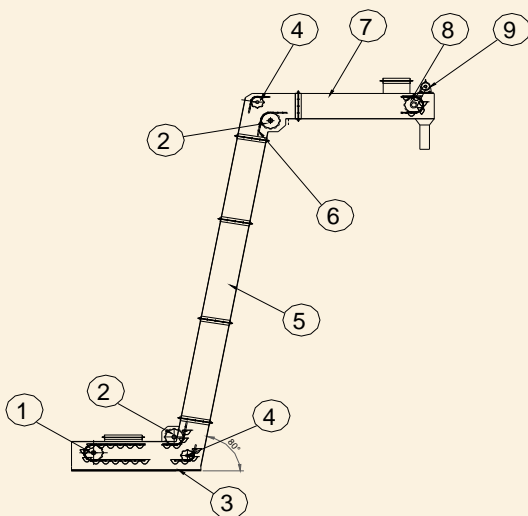
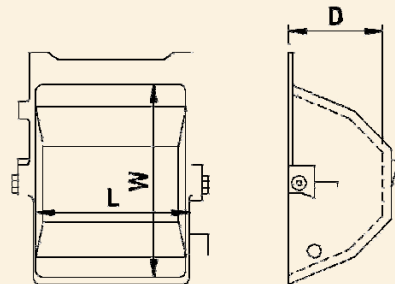
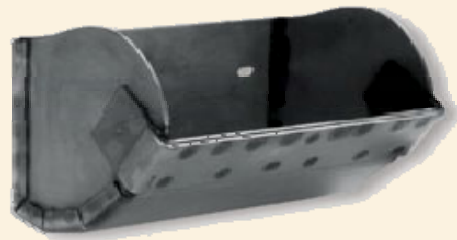
BUCKET ELEVATOR and CHAIN CONVEYOR MADE IN INDONESIA



BUCKET ELEVATOR

Bucket Elevators are the simplest and most dependable units for making vertical lifts. They are available in a wide range of capacities and may operate entirely in the open or totally enclosed. The trend is toward highly standardized units, but for special materials and high capacities it is wise to use specially engineered equipment. Main variations in quality are in casing thickness, bucket thickness, belt or chain quality, and drive equipment.

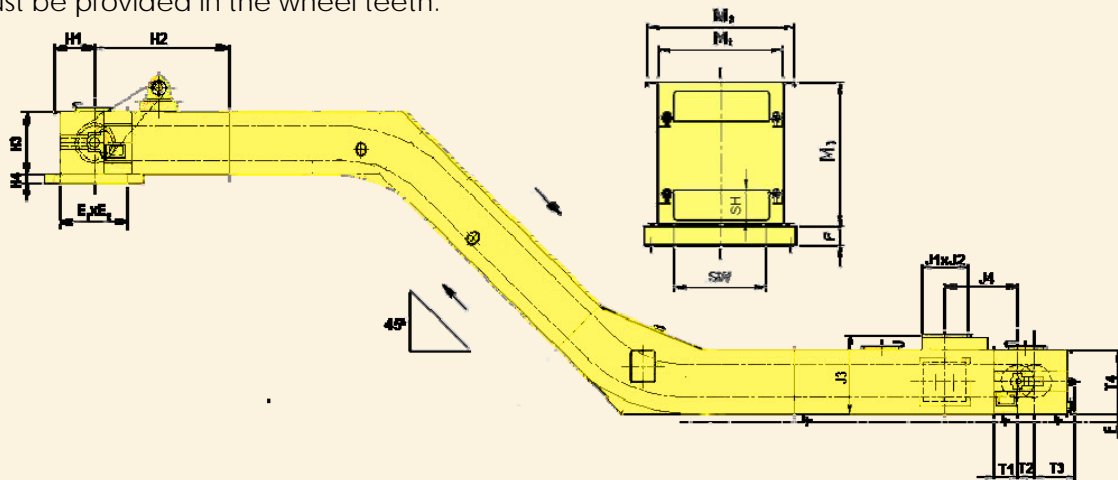
TYPE	D mm	L mm	W mm	Capacity cm ³
SNS - 6	62	152	112	830
SNS - 9	62	230	112	1.300
SNS - 12	62	305	112	1.670
SNS - 15	62	380	112	2.10
SNS - 18	62	458	112	2.520
Heavy Duty				
SNL - 9	134	216	276	5.700
SNL - 12	134	292	276	8.600
SNL - 15	134	368	276	10.800
SNL - 18	134	444	276	13.000
SNL - 24	134	600	276	16.500
SNL -30	134	750	276	20.700



No	NAME	Qty.
1	Tail Sprocket	2
2	Bend Sprocket 1	4
3	Boot Section	1
4	Bend Sprocket 2	4
5	Intermediate Casing	4
6	Chain	1
7	Head Section	1
8	Drive Sprocket	2
9	Gear Motor	1

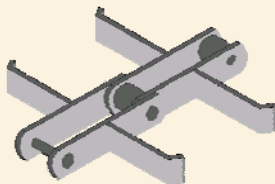
CHAIN CONVEYOR

The precision conveyor chain, like transmission chain, consists of a series of journal bearings held in precise relationship to each other by constraining link plates. Each bearing consists of a bearing pin and bush on which the chain roller revolves. There is, for each strength of conveyor chain, a range of pitches; the minimum pitch being governed by need for adequate wheel tooth strength; the maximum pitch being normally dictated by plate and general chain rigidity. When required, the normal maximum pitch can be exceeded by the use of strengthening bushes between the link plates, and suitable gaps to clear the bushes must be provided in the wheel teeth.

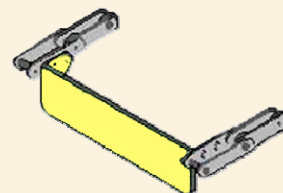


TYPE	DIMENSION (mm)																			
	SW	SH	H1	H2	H3	H4	E1	E2	M1	M2	M3	J1	J2	J3	J4	T1	T2	T3	T4	F
SNS-400	400	150	475	1800	735	100	800	610	610	760	735	600	350	960	925	300	200	517	735	100
		200	575	2000	935	125	1000				935	700		1160	1100	350	250	617	935	125
SNS-600	600	150	475	1800	735	100	800	810	810	960	735	600	550	960	925	300	200	517	735	100
		200	575	2000	935	125	1000				935	700		1160	1100	350	250	617	935	125
SNS-800	800	150	575	2000	935	125	1060	1060	1060	1210	935	700	750	1160	1100	350	250	617	935	125

Types of the Chain Conveyor



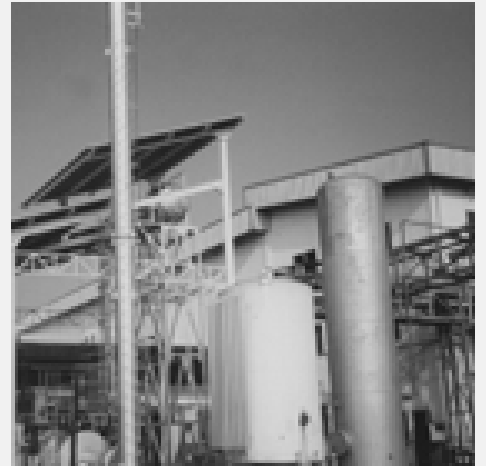
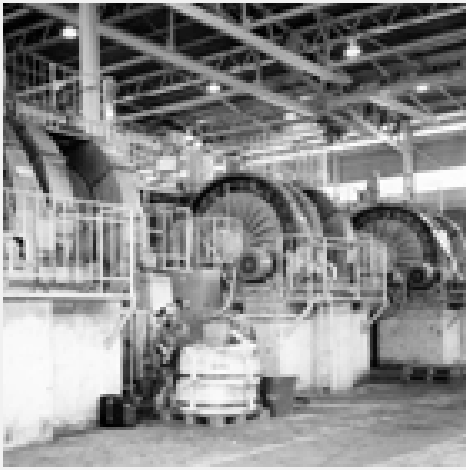
Single Chain



Double Chain

TECHNICAL DATA (to be filled out by the customer)

Material Information	:	Method of Loading	:
Product(s) Elevated	:	Indoors/Outdoors	:
Max Lump Size	:	Product Density #/hr.	:
Description of Discharge	:	Hr/Day Operation	:
Mat'l Characteristics	:	Continuous ? Intermittent	:
Product Weight t/Hr	:	Operating Cycle	:
Operating Cycle	:		



pt. cemara siko engineering indonesia

Head Office :
Gedung Mandiri Lantai 4.
Jl. Tanjung Karang No. 3-4A
Jakarta Pusat - 10230
Phone. +6221-3162540
Fax. +6221-3162542
Email : corp@siko.co.id
Website : www.siko.co.id

Project Office :
Jl. Kendal No. 7, Blora
Jakarta Pusat - 10310
Phone. +6221-3907655/56/57